



MODULAR GARDEN SAUNAS

The structural dimensions of the sauna:

External platform: 2,4x2,8m

External height: 2,1m to 2,3m

Sauna room area: 3,5sqm

Changing room area: 1,5sqm

„Your place for rest and relaxation“

Garden sauna

Our garden saunas are dedicated to the most demanding users who appreciate not only the health properties of saunas, but also a modern form of design combined with functionality. Made of the highest quality materials, they guarantee full regeneration and relaxation of the mind and body.

We offer the possibility of customizing the sauna to your needs, for example:

- making a larger terrace,
- different layout and size of windows,
- individual color of wood impregnation,
- different room layout.





Material specification

Roof construction

Structural timber 70x44mm certificated C24, 6cm wool, structure covered with OSB/MFP 15mm. Roof membrane, reinforced vapor barrier foil, special sauna aluminum foil in sauna area. Scandinavian spruce paneling.

Wall construction

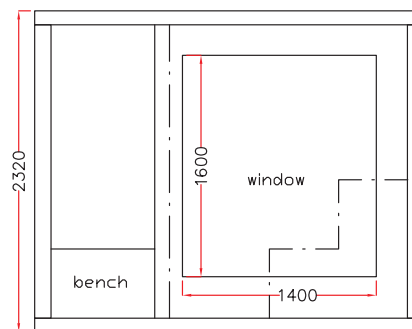
Structural timber 60x40mm, wool 6cm. Wind proofing, screened and reinforced vapor barrier foil, special sauna aluminum foil in sauna area. From outside walls are secured with OSB/MFP 12mm. The paneling inside of the sauna is made of Scandinavian spruce, from the outside the facade is made of Scandinavian spruce (impregnated twice), three walls are made of CEDRAL fiber cement tiles.

Floor construction

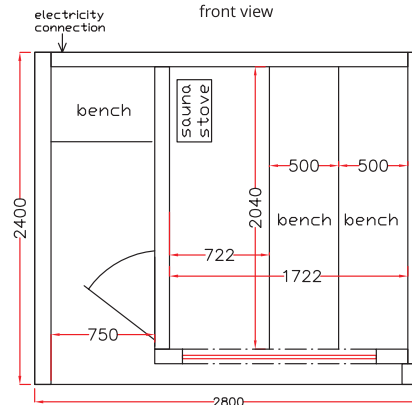
Structural timber 70x44mm certificated C24, on the bottom 12mm OSB/MFP board, 6cm mineral wool. Insulation made of construction foil and vapor barrier foil. Floor boards – Scandinavian spruce inside sauna, outside Scandinavian spruce (twice impregnated).

Additionally, the sauna includes:

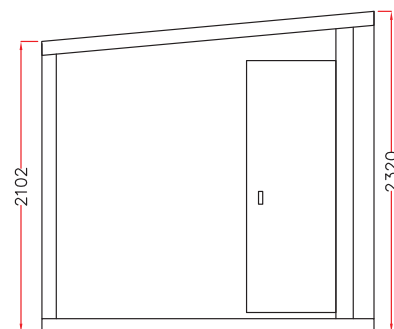
- one window, 1400mm x 1600mm, double-glazed, tempered,
- glass sauna door,
- electric socket in the changing room,
- interior lighting: 1 corner lamps in the sauna part, 2 outside lamps,
- Electric sauna stove.



front view



top view



side view